

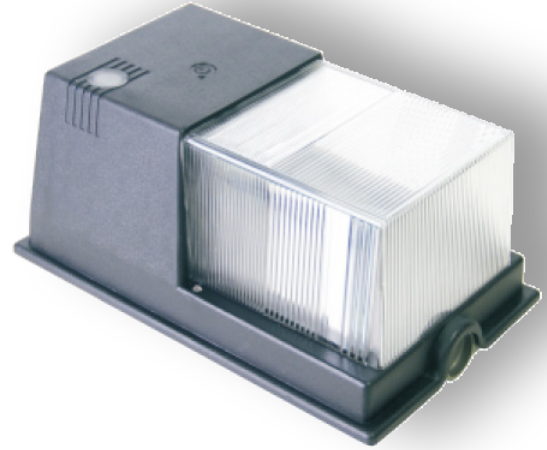


GREENSTONE (USA), INC.
 971 Corporate Way, Fremont, CA 94539, USA
 Toll Free: 877-206-5021, Fax: (510) 683-9313
 jamal@greenstoneusa.com, john@greenstoneusa.com
 www.greenstoneusa.com

LED Wallpack Light

GS-WP-30W-5000

LED Wallpack Light Data Sheet



Specifications	
Dimensions	10.7"×6.8"×5.2"
	273mm×173mm×133mm
Model No.	GS-WP-30W-5000
Input Power	30W
Lumen Output	2,700 lm
Lumen Efficiency	90lm/W
Color Temperature	5000K
ETL Code	Yes
DLC Code	Yes
CRI	>70
IP Grade	IP65
Input Voltage	AC100~277V,50/60Hz
Materials	
Power Driver	UL Driver
LED Brand	Philips 3030
Lens	UV
Housing	Die-cast Aluminum
Additional	
Operating Temp.	-35°C To 55°C
Operating Humidity	20%~85% RH
Storage Temp.	-30°C To 80°C
Storage Humidity	10%~75% RH
Application	Outdoor
Safety Certification	ETL DLC Lighting Facts
Rated Lifetime	50,000 Hours
Warranty Time	5 Years (Extended Available)

Widely used in corridor, balcony, parking lot or other outside wall of building area lighting, etc.

100% Die-cast aluminum housing, the surface electrostatic spraying, anti-acid coating, anti-aging coating, anti-aging, high temperature.

Built-in light module, easy maintenance, low maintenance costs. Available with Photocell or PIR sensor.

50,000 hours life rating, **5 years warranty** and extensions available.





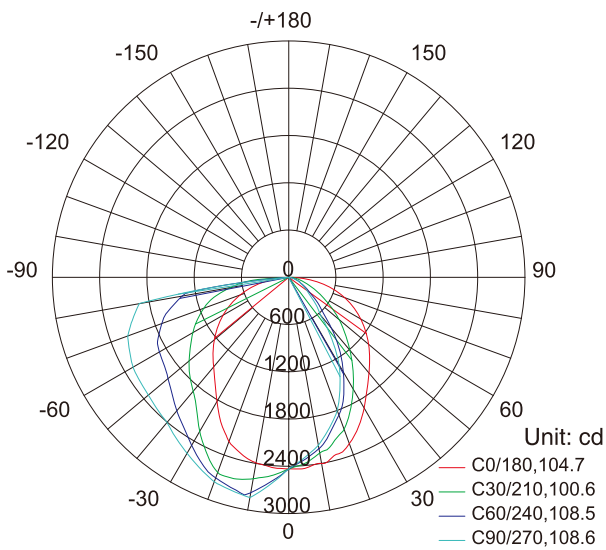
GREENSTONE (USA), INC.
 971 Corporate Way, Fremont, CA 94539, USA
 Toll Free: 877-206-5021, Fax: (510) 683-9313
 jamal@greenstoneusa.com, john@greenstoneusa.com
 www.greenstoneusa.com

LED Wallpack Light

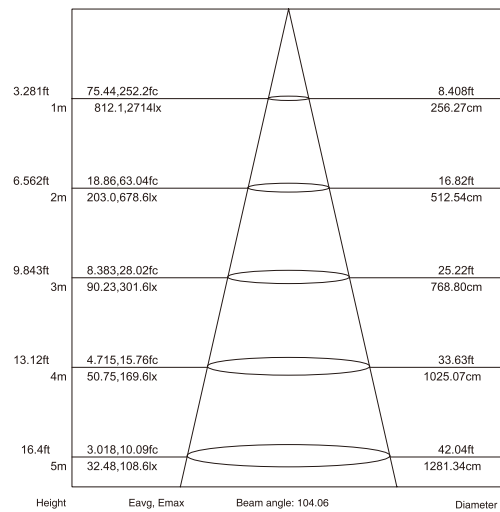


Light Distribution Curve Reference :

Light Distribution Curve Drawing

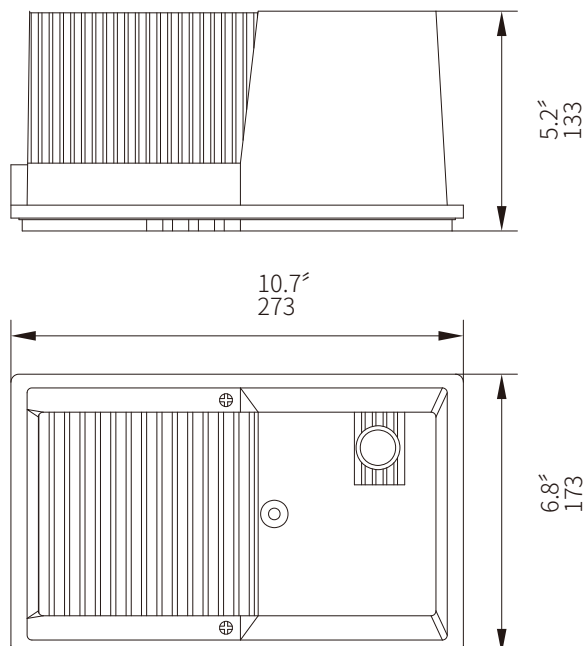


Illumination Distribution Drawing



Average beam angle(50%): 105.6°

Drawing:





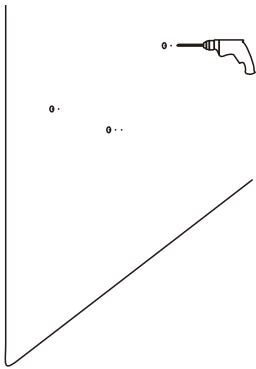
GREENSTONE (USA), INC.
971 Corporate Way, Fremont, CA 94539, USA
Toll Free: 877-206-5021, Fax: (510) 683-9313
jamal@greenstoneusa.com, john@greenstoneusa.com
www.greenstoneusa.com

LED Wallpack Light

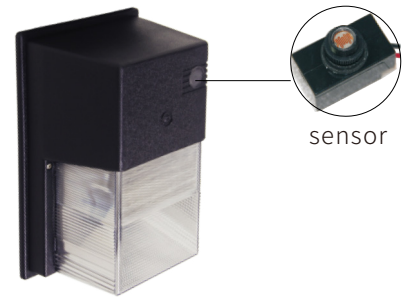
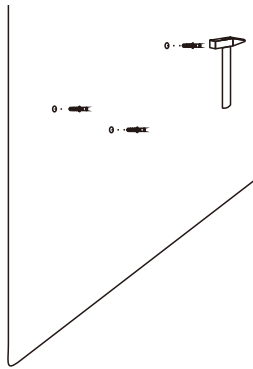


Installation

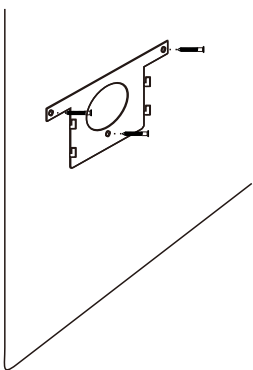
1. Wall perforation.
(According to the location and size of a good plan hole)



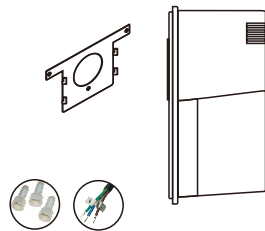
2. Buried plastic expansion.
(Note: flush with the wall)



3. Tighten the fixture parts with screws.



4. Hang up the wall lamp.
(Note the direction of the wall lamp)



Connect the input cable.
(Perform in case of power failure.)





GREENSTONE (USA), INC.
 971 Corporate Way, Fremont, CA 94539, USA
 Toll Free: 877-206-5021, Fax: (510) 683-9313
 jamal@greenstoneusa.com, john@greenstoneusa.com
 www.greenstoneusa.com

LED Wallpack Light

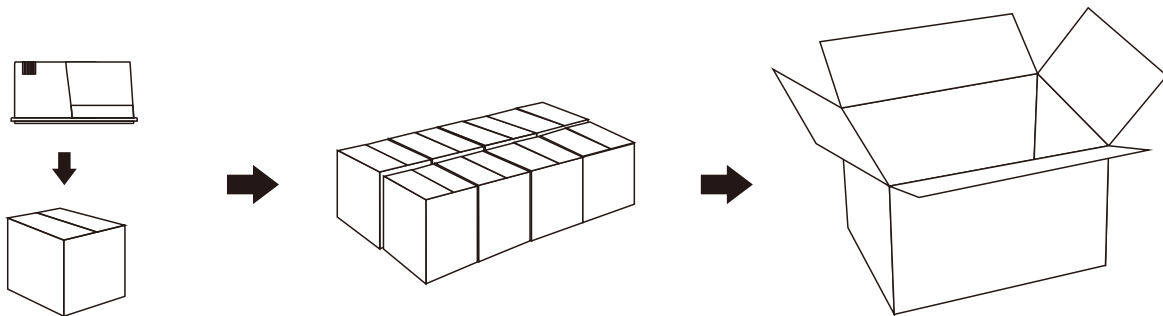


Ordering Information:

Model No.	Power Usage	Dimensions L×W×H	Weight (lbs)	CCT	Input Voltage
GS-WP-30W-5000	30W	10.7"×6.8"×5.2"	3.7	5000K	AC 100-277V

Packaging:

Model No.	Q'ty Per Carton	Carton Size L×W×H	Gross Weight (lbs)
GS-WP-30W-5000	8	25.0"×14.8"×12.2"	34





GREENSTONE (USA), INC.
971 Corporate Way, Fremont, CA 94539, USA
Toll Free: 877-206-5021, Fax: (510) 683-9313
jamal@greenstoneusa.com, john@greenstoneusa.com
www.greenstoneusa.com

LED Wallpack Light



Warranty

5 years warranty for original purchaser of LED product that is identified on seller's invoice reflecting its original purchase (the "Product").

1. In order to make a warranty claim, you must notify seller in writing within sixty (60) days after your discovery of the defect, provide proof of purchase such as the invoice and comply with seller's other warranty requirements. Upon receiving that notice, to ascertain why fixtures stop working, evidences would be needed for seller's QC Team to analyze. Seller may require you to promptly return the Product to Seller when necessary, freight prepaid.
2. The determination of whether the Product is defective shall be made by Seller in its sole discretion with consideration given to the overall performance of the Product.
3. If seller determines the Product is defective, Seller will elect, in its sole discretion, repair the Product or replace the Product. Seller reserves the right to utilize new, reconditioned, refurbished, repaired or remanufactured products or parts in the warranty repair or replacement process. Such products and parts will be comparable in function and performance to an original product or part, as determined by Seller in its sole discretion, and warranted for the remainder of the original warranty period. However, cost of labor and equipment to remove the defective product and install a repaired or a replacement Product at the end-user facility are excluded. Supplier's aggregate liability with respect to a defective product shall in any event be limited to the money paid to buyer for that defective product.

The following circumstances will not be warranted:

1. Damage caused by force majeure such as war, riots, sabotage, cyclones, earthquakes, tidal waves, flooding, lighting strikes, explosions, fire, flood, etc.
2. Damage caused by user's improper delivery, defects caused by wrong operation, wrong treatment and destruction of machinery.
3. Dismantling or modification or improper maintenance or repairing of the products without the supplier's authorization.
4. Damage caused by buyer or installer using bad quality cable or other mismatching electronic parts.
5. This warranty is invalid if the product is not used for the purpose for which is originally designed. Any disputes occurred shall be applied to the laws and regulations of P.R.C.

The seller has the sole right to interpret and amend the above articles.

Reminder

We appreciate your purchase!
Please read the instruction manual before installation and keep it for future reference.

Warning

1. To avoid damage, falling, electric shock or fire, please do not modify the lamp or replace accessories without confirming with the supplier first.
2. Please authorize only qualified personnel to install the lamp and ensure they follow the instruction manual. Any improper installation might cause falling, electric shock, fire, or other injury, damage or hazard.
3. Please disconnect power before installation or any maintenance of the lamp.
4. Please disconnect power if it begins to smoke or emit odors, since fire or electric shock may occur. Ask qualified person to inspect and maintain the luminaire.
5. Please do not dismantle the lamp without the supplier's authorization.
6. Please do not touch the power supply when the lamp is operating.
7. If the external flexible cable or cord of the luminaire is damaged, it should only be replaced by the supplier, a service agent or qualified person.