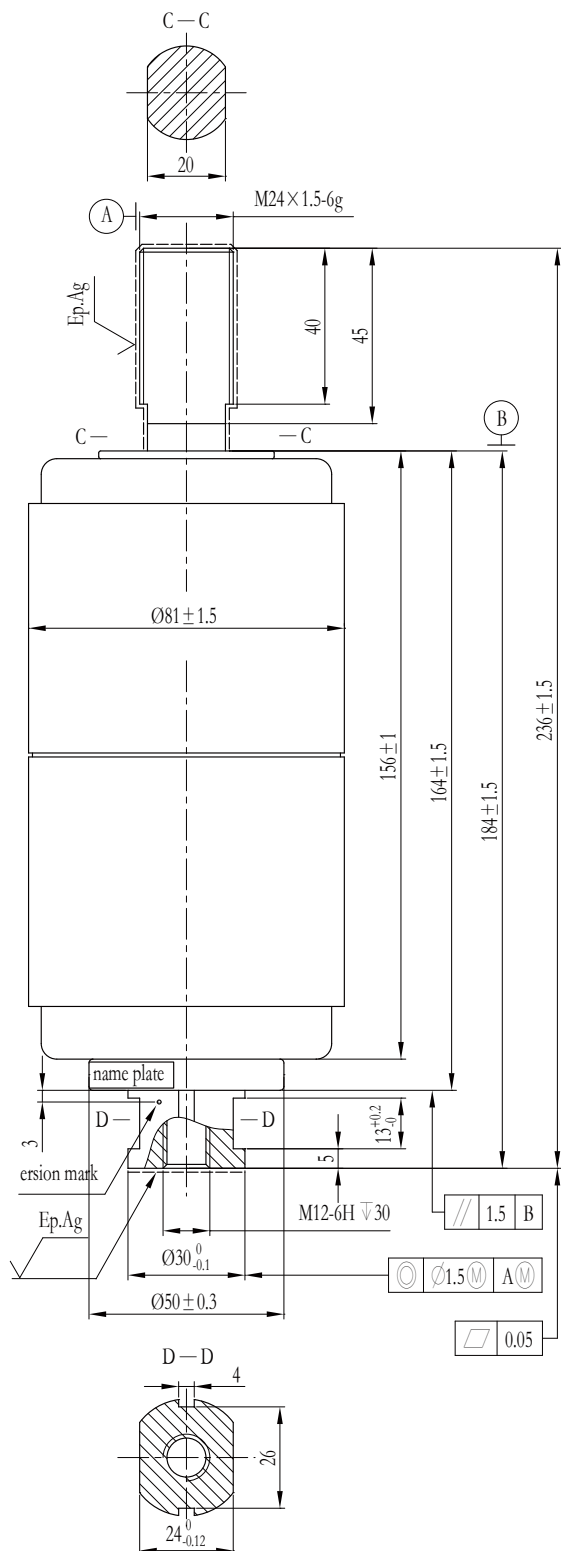


GTD-24/1250-20C



Note 1: “☆” Within transformer oil or equivalent isolation medium;

Note 2: “※” Rated characteristics to be given on request;

Note 3: Meets or exceeds the electrical endurance requirements of class E2 for autoreclosing duty per IEC 62271-100;

Note 4: The movable stem of the vacuum interrupter could not suffer on more than 40N · m twisting force and in order not to damage the metal bellows, the movable stem should be prevented from rotation when assembling. For more requirements please check the Instructions of Usage.

Main Technical Data

Item	Unit	Value
Rated Voltage	kV	24
Lightning Impulse Withstand Voltage (Peak)	kV	125☆
Short-time (1min) Power-frequency Withstand Voltage	kV	50/65☆
Rated Frequency	Hz	60
Rated Current	A	1250
Rated Short-time Withstand Current	kA	20
Rated Duration of Short-circuit	s	4
Rated Peak Withstand Current	kA	50
Rated Short-circuit Making Current	kA	50
Rated Short-circuit Breaking Current	kA	20
Max. Dc Component		50%
Switch Operations of Rated Short-circuit Breaking Current	Operations	30
Rated Single Capacitor Bank Breaking Current	A	400※
Rated Back-to-Back Capacitor Bank Breaking Current	A	400※
Mechanical Endurance	Operations	10000
Clearance Between Open Contacts	mm	13 ± 1
Contact Closed Force Due to Bellows and Atmosphere	N	110 ± 40
Counterforce of Contact at Full Stroke	N	190 ± 40
Circuit Resistance at Min. Rated Contact Force	μΩ	≤ 18
Contact Limit Erosion	mm	3
Mass of Moving Parts	kg	0.9
Internal Gas Pressure	Pa	< 1.33 × 10 ⁻³
Shelf Life	Years	20
Rated Operating Sequence		Open-0.3s-CO-180s-CO

Mechanical Data of Switch Equipped With Interrupter

Item	Unit	Value
Average Opening Speed (first 6mm)	m/s	1.4 ± 0.2
Average Closing Speed (last 6mm)	m/s	0.8 ± 0.2
Contact Bounce Duration at Closing Operation	ms	≤ 2
Out of Simultaneity of Contact Closing and Opening	ms	≤ 1
Rated Contact Pressure	N	1800 ⁺⁴⁰⁰ ₀
Contact Pressure at Contact Touch Point	N	1260 ⁺³⁰⁰ ₀
Max. Rebound of Contact at Opening Operation	mm	2
Overtravel During Opening	mm	≤ 2